

# 740 MERIDIAN

South Beach, Miami  
A condominium

MONARCHY

INTERNATIONAL REALTY

[www.monarchyinternationalrealty.com](http://www.monarchyinternationalrealty.com)

(786)398-6379

The most Desirable Street in South Beach



**MONARCHY**

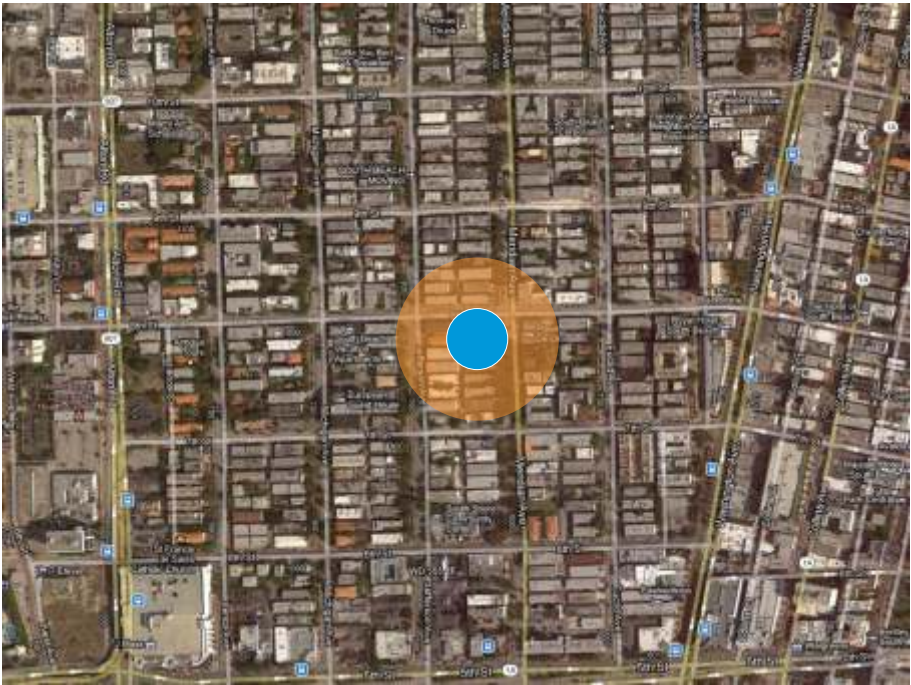
INTERNATIONAL REALTY

[www.monarchyinternationalrealty.com](http://www.monarchyinternationalrealty.com)

NOTE:  
Plans, materials and specifications are subject to architectural and other revisions at the sole discretion of the developer, builder or architect, or as may be requested by law. Floor plans shown are not to any particular scale. All dimensions are approximate, and floor plans are subject to change. Oral representations cannot be relied upon to correctly state the representations of the developer. For correct representations, make reference to the document required by section 718.503 Florida Statutes to be furnished by a developer to a buyer or lessee. This is not an offer to sell, or solicitation of offers to buy the condominium units in state where such offer of solicitation cannot be made.

In the heart of the famous South Beach, steps from 5th Street, main entrance to Miami Beach and the prestigious South of Fifth neighborhood and the fastest connection to the Miami International Airport. Six blocks away from the world recognized Ocean Drive. A brand new Publix Supermarket, Walgreen's Pharmacy, Best Buy and Ross Store just two blocks away. A few blocks south of the renowned "Lincoln Road" pedestrian street and restaurant corridor. Walking distance of one of the sexiest beaches in the world.

740 MERIDIAN, SOUTH BEACH. MIAMI



ART GALLERIES / MUSEUMS

1. Art Center S. Florida
2. Ashmore Gallery
3. Bass Museum
4. Bettcher Gallery
5. Britto Central
6. Carel gallery
7. Howard Austin Fled
8. Marcel Gallery
9. Wolfsonian Museum

LOUNGES

1. Automatic Slim's
2. Buck 15
3. Clevelander
4. Flute
5. Laundry Bar
6. Nobu Lounge
7. Purdy Lounge
8. Spire at the Hotel
9. The Room
10. Wet Willie's
11. Zee Lounge / National

NIGHTCLUBS

1. Dream
2. Bed (Closed)
3. Cameo / Vice
4. Mango's
5. Mansion
6. Mokai
7. Mynt
8. Pearl
9. Opium Garden / Priv
10. Rok Bar
11. Rose Bar / Delano
12. Score
13. Sky Bar Miami Beach
14. Twist

BEACH CLUBS

12. Di Lido Beach Club
13. La Piaggia
14. Nikki Beach Club
15. Raleigh Hotel

**MONARCHY**  
INTERNATIONAL REALTY  
[www.monarchyinternationalrealty.com](http://www.monarchyinternationalrealty.com)

NOTE:  
Plans, materials and specifications are subject to architectural and other revisions at the sole discretion of the developer, builder or architect, or as may be requested by law. Floor plans shown are not to any particular scale. All dimensions are approximate, and floor plans are subject to change. Oral representations cannot be relied upon to correctly state the representations of the developer. For correct representations, make reference to the document required by section 718.503 Florida Statutes to be furnished by a developer to a buyer or lessee. This is not an offer to sell, or solicitation of offers to buy the condominium units in state where such offer of solicitation cannot be made.

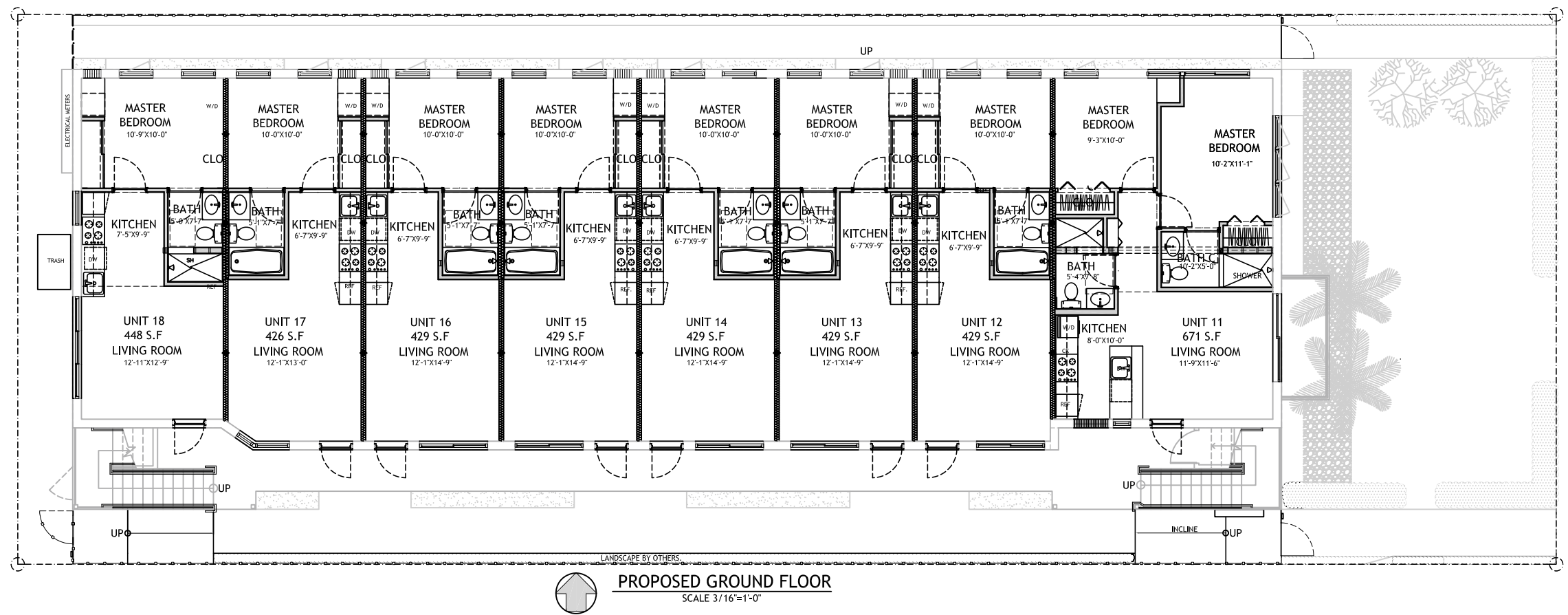
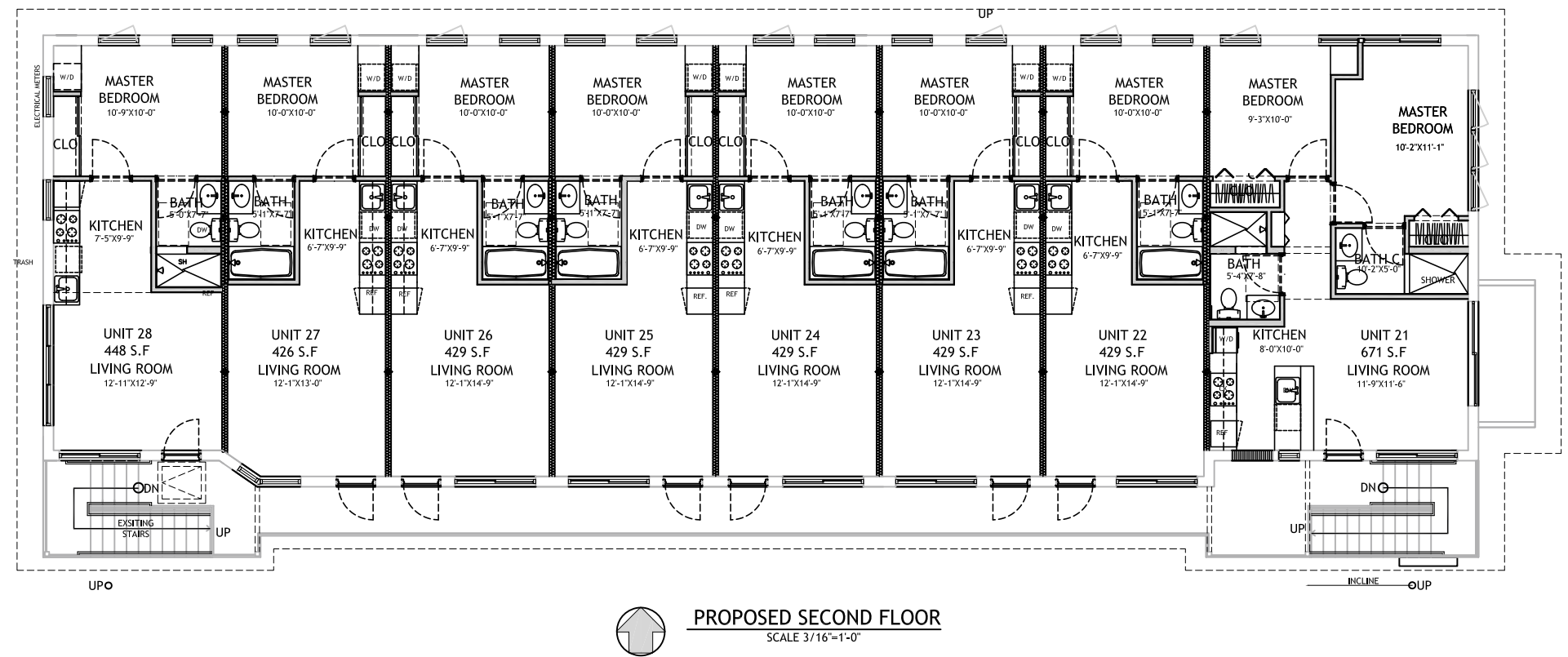


# MONARCHY

INTERNATIONAL REALTY

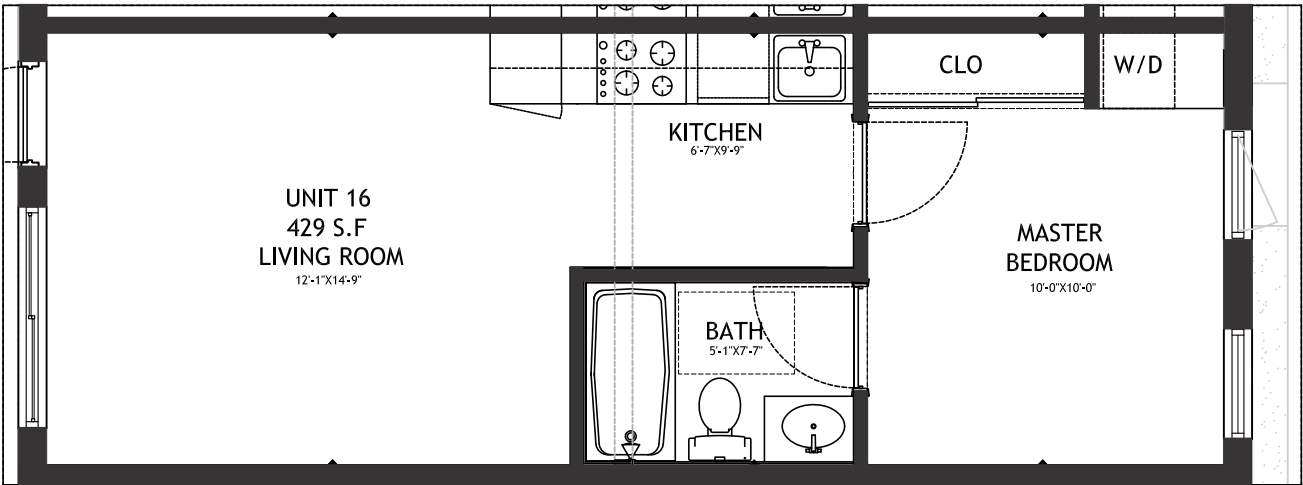
[www.monarchyinternationalrealty.com](http://www.monarchyinternationalrealty.com)

NOTE:  
Plans, materials and specifications are subject to architectural and other revisions at the sole discretion of the developer, builder or architect, or as may be requested by law. Floor plans shown are not to any particular scale. All dimensions are approximate, and floor plans are subject to change. Oral representations cannot be relied upon to correctly state the representations of the developer. For correct representations, make reference to the document required by section 718.503 Florida Statutes to be furnished by a developer to a buyer or lessee. This is not an offer to sell, or solicitation of offers to buy the condominium units in state where such offer of solicitation cannot be made.

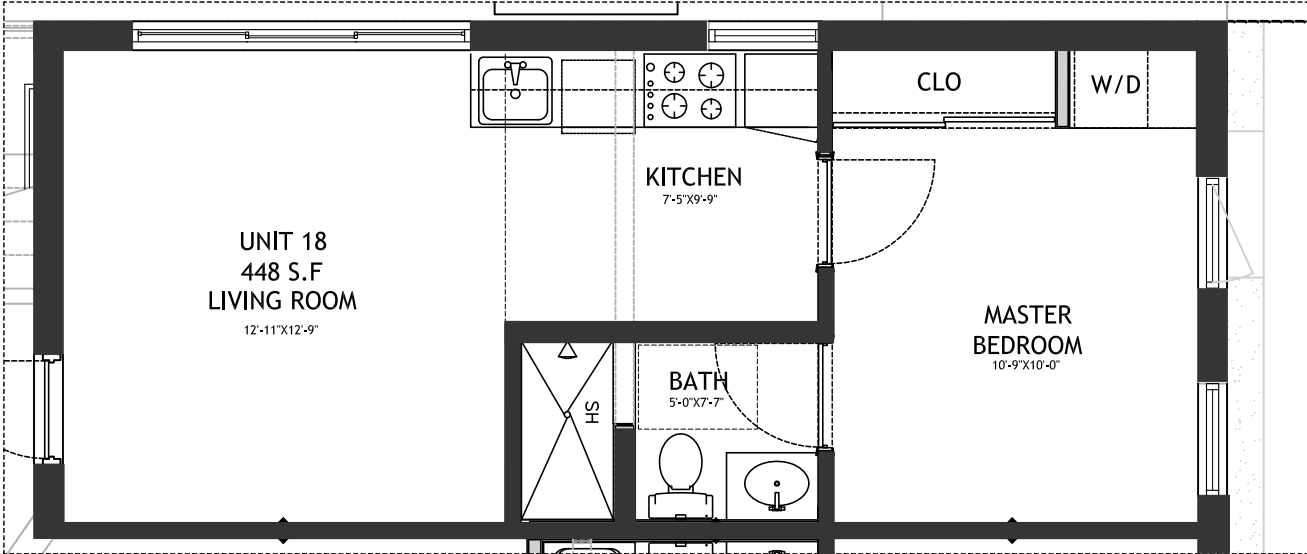


**MONARCHY**  
INTERNATIONAL REALTY  
[www.monarchyinternationalrealty.com](http://www.monarchyinternationalrealty.com)

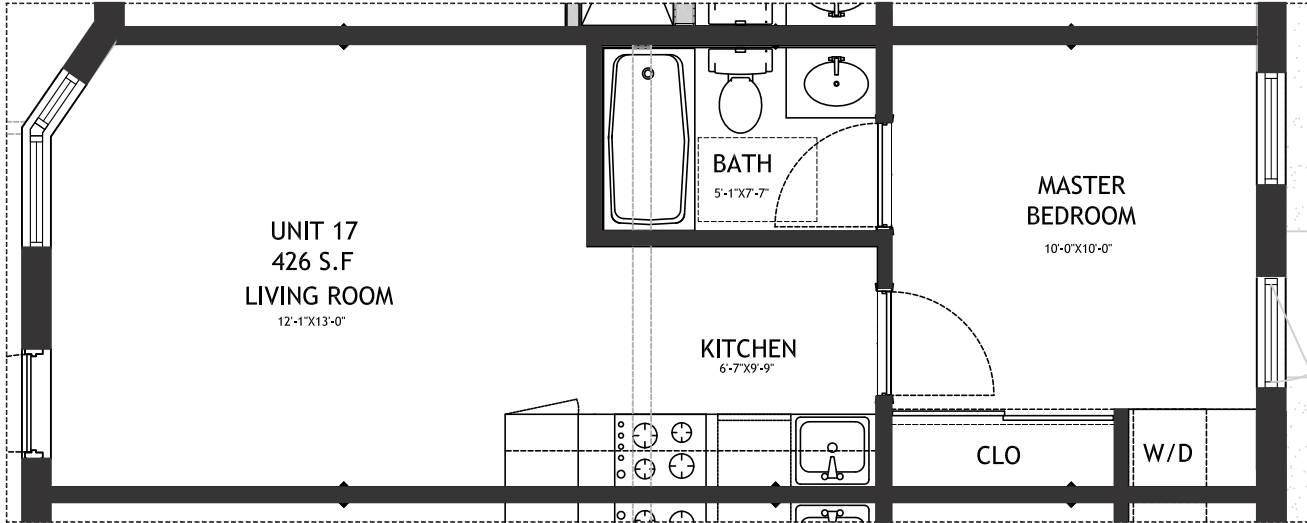
NOTE:  
Plans, materials and specifications are subject to architectural and other revisions at the sole discretion of the developer, builder or architect, or as may be requested by law. Floor plans shown are not to any particular scale. All dimensions are approximate, and floor plans are subject to change. Oral representations cannot be relied upon to correctly state the representations of the developer. For correct representations, make reference to the document required by section 718.503 Florida Statutes to be furnished by a developer to a buyer or lessee. This is not an offer to sell, or solicitation of offers to buy the condominium units in state where such offer of solicitation cannot be made.



ENLARGE FLOOR PLAN  
UNITS 16 -15-14-13-12-26-25-24-23-22



ENLARGE FLOOR PLAN  
UNITS 18-28  
SCALE: 3/4" = 1'-0"



ENLARGE FLOOR PLAN  
UNITS 17-27

**MONARCHY**

INTERNATIONAL REALTY  
[www.monarchyinternationalrealty.com](http://www.monarchyinternationalrealty.com)

NOTE:  
Plans, materials and specifications are subject to architectural and other revisions at the sole discretion of the developer, builder or architect, or as may be requested by law. Floor plans shown are not to any particular scale. All dimensions are approximate, and floor plans are subject to change. Oral representations cannot be relied upon to correctly state the representations of the developer. For correct representations, make reference to the document required by section 718.503 Florida Statutes to be furnished by a developer to a buyer or lessee. This is not an offer to sell, or solicitation of offers to buy the condominium units in state where such offer of solicitation cannot be made.



## Characteristics:

- Contemporary Bathroom Fixtures
- Italian Style Kitchen Cabinet
- Granite Counter Tops
- Porcellanato Tile
- Hard wood floors
- Dade County Approved Hurricane Resistant
- Impact windows
- Dade County Approved Hurricane Resistant
- Impact Doors with glass
- Luscious landscape with palmtrees
- Art DECO Architecture

## Appliances:

- Stainless Steel Refrigerator
- Stainless Steel Microwave
- Stainless Steel Range
- Stainless Steel Compact Dishwasher

# MONARCHY

INTERNATIONAL REALTY

[www.monarchyinternationalrealty.com](http://www.monarchyinternationalrealty.com)

NOTE:  
Plans, materials and specifications are subject to architectural and other revisions at the sole discretion of the developer, builder or architect, or as may be requested by law. Floor plans shown are not to any particular scale. All dimensions are approximate, and floor plans are subject to change. Oral representations cannot be relied upon to correctly state the representations of the developer. For correct representations, make reference to the document required by section 718.503 Florida Statutes to be furnished by a developer to a buyer or lessee. This is not an offer to sell, or solicitation of offers to buy the condominium units in state where such offer of solicitation cannot be made.