

# 1035 euclid

South Beach, Miami  
A condominium

**MONARCHY**

INTERNATIONAL REALTY

[www.monarchyinternationalrealty.com](http://www.monarchyinternationalrealty.com)

(786)398-6379



**MONARCHY**  
INTERNATIONAL REALTY  
[www.monarchyinternationalrealty.com](http://www.monarchyinternationalrealty.com)

NOTE:  
Plans, materials and specifications are subject to architectural and other revisions at the sole discretion of the developer, builder or architect, or as may be requested by law. Floor plans shown are not to any particular scale. All dimensions are approximate, and floor plans are subject to change. Oral representations cannot be relied upon to correctly state the representations of the developer. For correct representations, make reference to the document required by section 718.503 Florida Statutes to be furnished by a developer to a buyer or lessee. This is not an offer to sell, or solicitation of offers to buy the condominium units in state where such offer of solicitation cannot be made.



1035 EUCLID, SOUTH BEACH. MIAMI



**MONARCHY**  
INTERNATIONAL REALTY  
[www.monarchyinternationalrealty.com](http://www.monarchyinternationalrealty.com)

NOTE:  
Plans, materials and specifications are subject to architectural and other revisions at the sole discretion of the developer, builder or architect, or as may be requested by law. Floor plans shown are not to any particular scale. All dimensions are approximate, and floor plans are subject to change. Oral representations cannot be relied upon to correctly state the representations of the developer. For correct representations, make reference to the document required by section 718.503 Florida Statutes to be furnished by a developer to a buyer or lessee. This is not an offer to sell, or solicitation of offers to buy the condominium units in state where such offer of solicitation cannot be made.





**MONARCHY**

INTERNATIONAL REALTY  
[www.monarchyinternationalrealty.com](http://www.monarchyinternationalrealty.com)

NOTE:  
Plans, materials and specifications are subject to architectural and other revisions at the sole discretion of the developer, builder or architect, or as may be requested by law. Floor plans shown are not to any particular scale. All dimensions are approximate, and floor plans are subject to change. Oral representations cannot be relied upon to correctly state the representations of the developer. For correct representations, make reference to the document required by section 718.503 Florida Statutes to be furnished by a developer to a buyer or lessee. This is not an offer to sell, or solicitation of offers to buy the condominium units in state where such offer of solicitation cannot be made.

1035 euclid

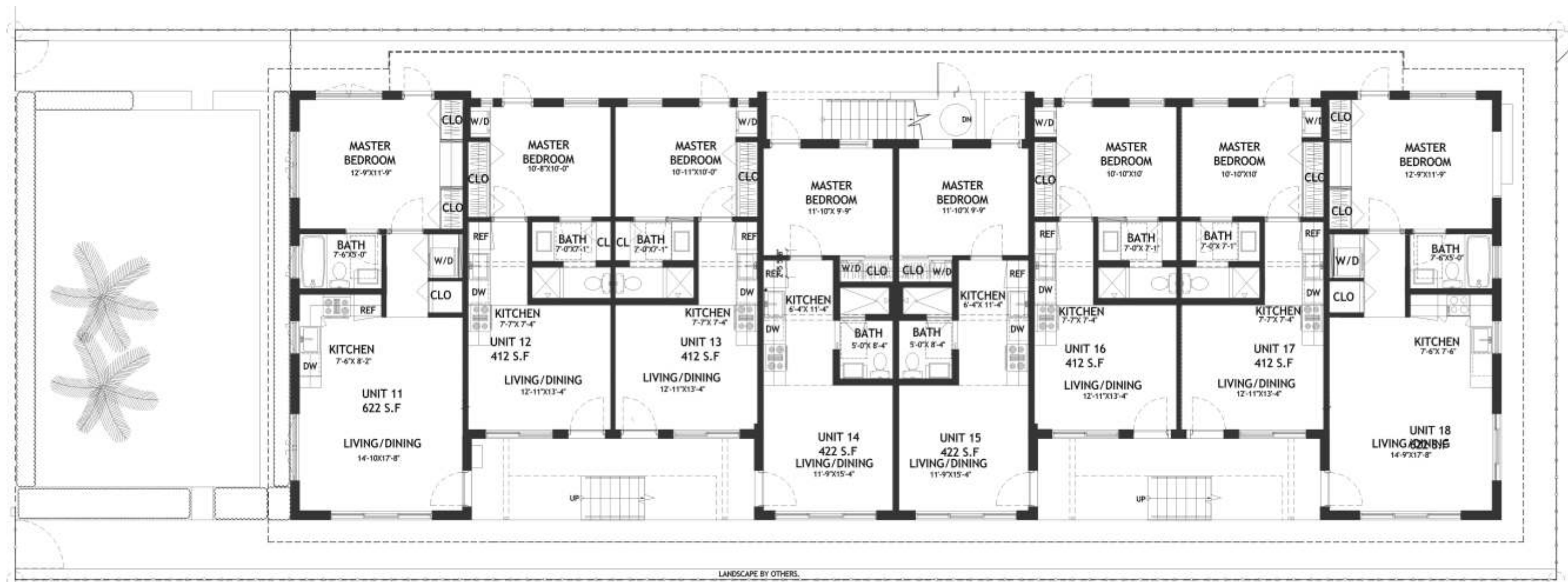


**MONARCHY**

INTERNATIONAL REALTY  
[www.monarchyinternationalrealty.com](http://www.monarchyinternationalrealty.com)

NOTE:  
Plans, materials and specifications are subject to architectural and other revisions at the sole discretion of the developer, builder or architect, or as may be requested by law. Floor plans shown are not to any particular scale. All dimensions are approximate, and floor plans are subject to change. Oral representations cannot be relied upon to correctly state the representations of the developer. For correct representations, make reference to the document required by section 718.503 Florida Statutes to be furnished by a developer to a buyer or lessee. This is not an offer to sell, or solicitation of offers to buy the condominium units in state where such offer of solicitation cannot be made.



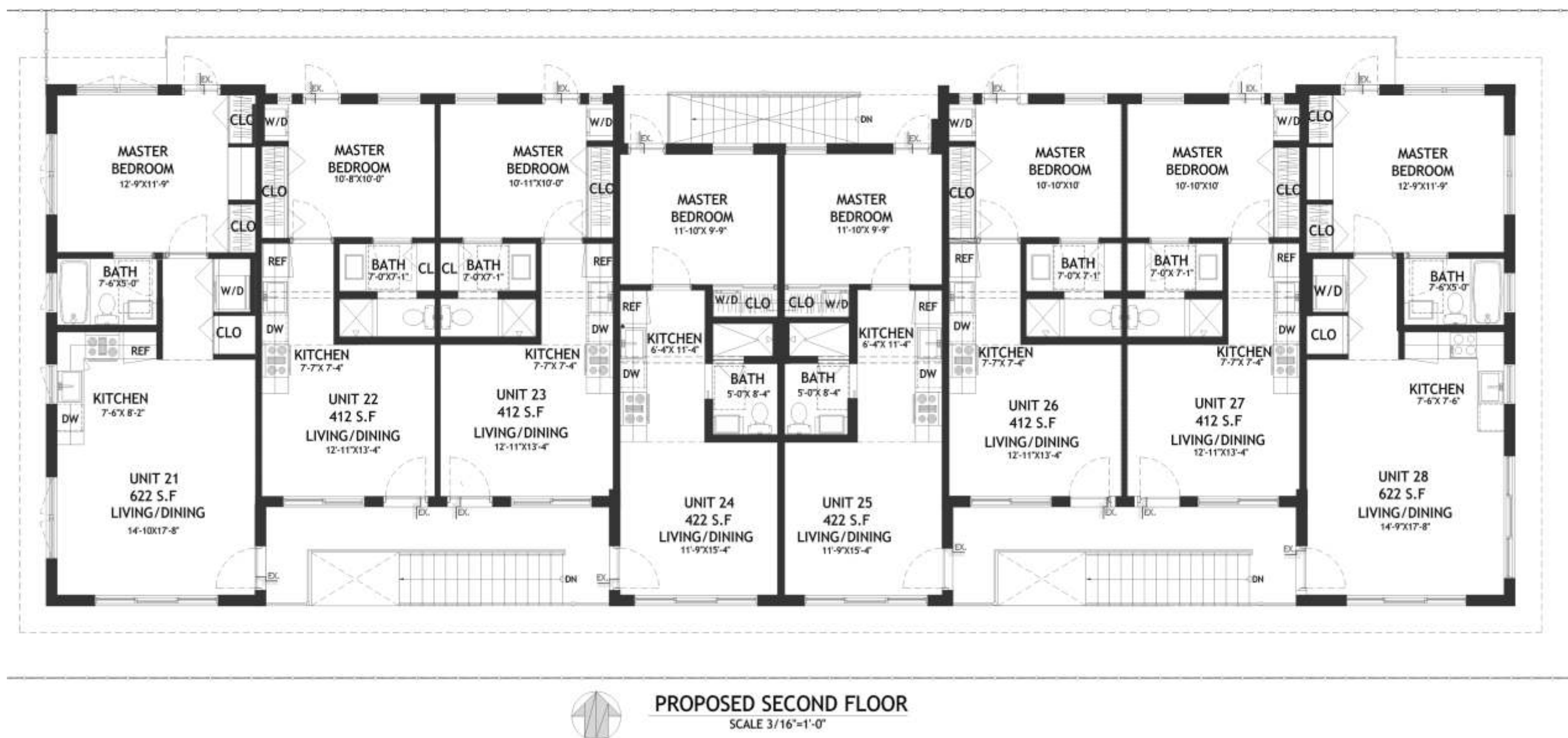


**PROPOSED GROUND FLOOR**  
SCALE 3/16"=1'-0"

# MONARCHY

INTERNATIONAL REALTY  
[www.monarchyinternationalrealty.com](http://www.monarchyinternationalrealty.com)

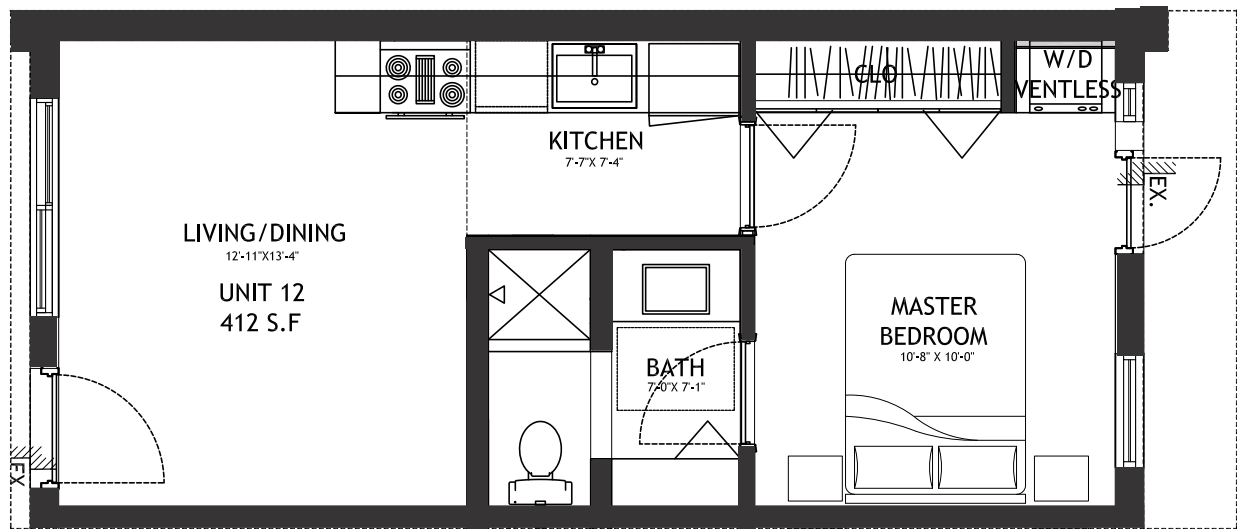
**NOTE:**  
Plans, materials and specifications are subject to architectural and other revisions at the sole discretion of the developer, builder or architect, or as may be requested by law. Floor plans shown are not to any particular scale. All dimensions are approximate, and floor plans are subject to change. Oral representations cannot be relied upon to correctly state the representations of the developer. For correct representations, make reference to the document required by section 718.503 Florida Statutes to be furnished by a developer to a buyer or lessee. This is not an offer to sell, or solicitation of offers to buy the condominium units in state where such offer of solicitation cannot be made.



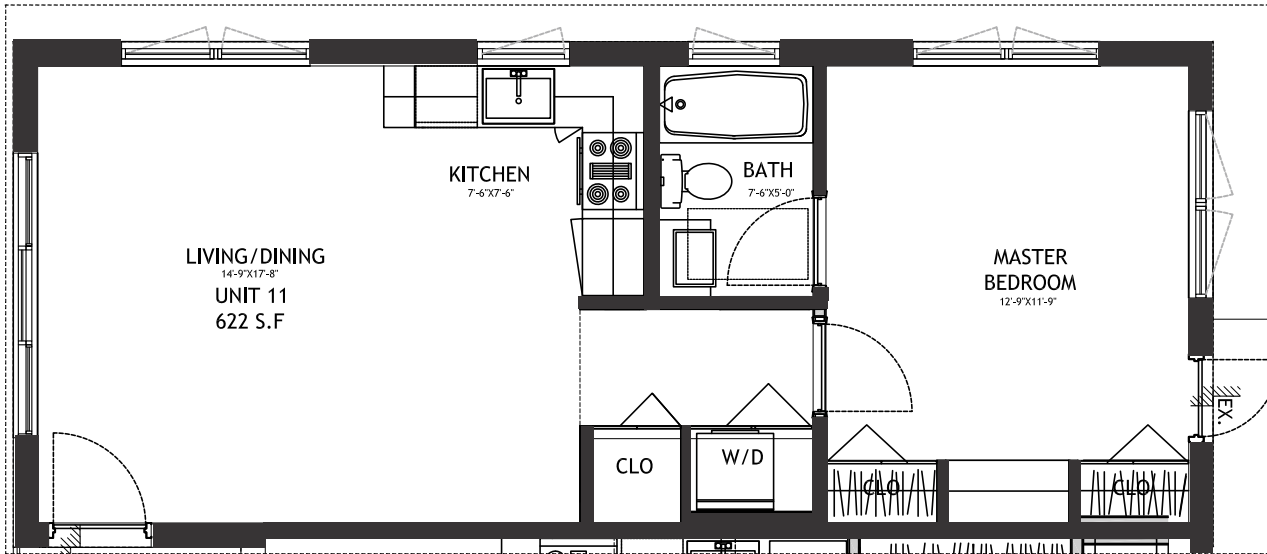
# MONARCHY

INTERNATIONAL REALTY  
[www.monarchyinternationalrealty.com](http://www.monarchyinternationalrealty.com)

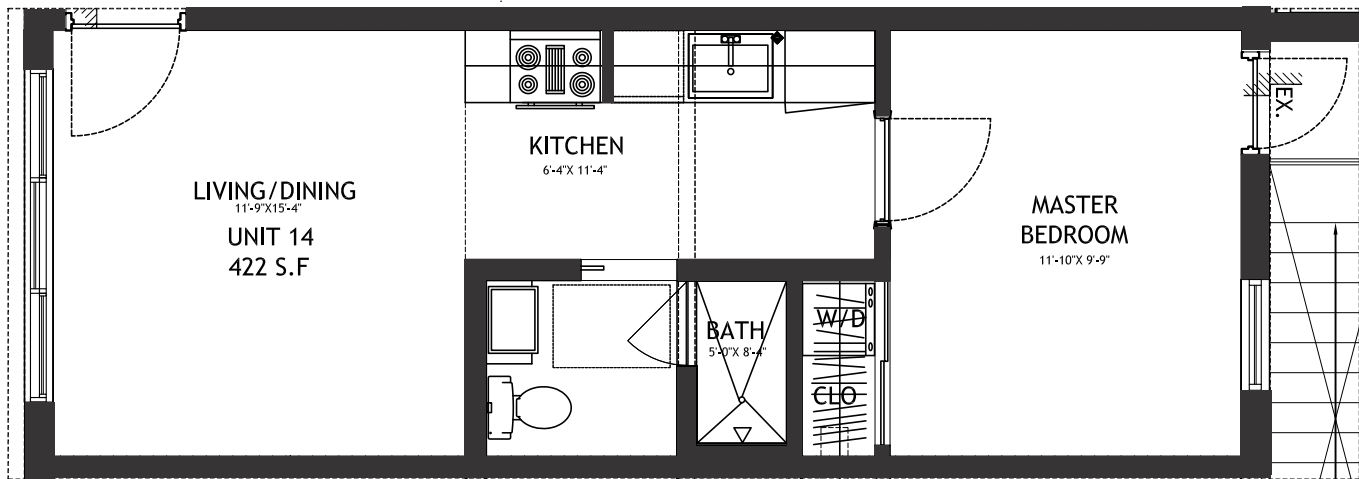
**NOTE:**  
 Plans, materials and specifications are subject to architectural and other revisions at the sole discretion of the developer, builder or architect, or as may be requested by law. Floor plans shown are not to any particular scale. All dimensions are approximate, and floor plans are subject to change. Oral representations cannot be relied upon to correctly state the representations of the developer. For correct representations, make reference to the document required by section 718.503 Florida Statutes to be furnished by a developer to a buyer or lessee. This is not an offer to sell, or solicitation of offers to buy the condominium units in state where such offer of solicitation cannot be made.



ENLARGE FLOOR PLAN  
UNITS 12 -13-16-17-22-23-26-27



ENLARGE FLOOR PLAN  
UNITS 11-18-21-28



ENLARGE FLOOR PLAN  
UNITS 14-15-24-25

NOTE:  
Plans, materials and specifications are subject to architectural and other revisions at the sole discretion of the developer, builder or architect, or as may be requested by law. Floor plans shown are not to any particular scale. All dimensions are approximate, and floor plans are subject to change. Oral representations cannot be relied upon to correctly state the representations of the developer. For correct representations, make reference to the document required by section 718.503 Florida Statutes to be furnished by a developer to a buyer or lessee. This is not an offer to sell, or solicitation of offers to buy the condominium units in state where such offer of solicitation cannot be made.





## Characteristics:

- Contemporary Bathroom Fixtures
- Italian Style Kitchen Cabinet
- Granite Counter Tops
- Porcellanato Tile
- Hardwood Flooring
- Dade County Approved Hurricane Resistant
- Impact windows
- Dade County Approved Hurricane Resistant
- Impact Doors with glass
- Luscious landscape with palmtrees
- Art DECO Architecture

## Appliances:

- Stainless Steel Refrigerator
- Stainless Steel Microwave
- Stainless Steel Range
- Stainless Steel Compact Dishwasher

# MONARCHY

INTERNATIONAL REALTY

[www.monarchyinternationalrealty.com](http://www.monarchyinternationalrealty.com)

**NOTE:**  
Plans, materials and specifications are subject to architectural and other revisions at the sole discretion of the developer, builder or architect, or as may be requested by law. Floor plans shown are not to any particular scale. All dimensions are approximate, and floor plans are subject to change. Oral representations cannot be relied upon to correctly state the representations of the developer. For correct representations, make reference to the document required by section 718.503 Florida Statutes to be furnished by a developer to a buyer or lessee. This is not an offer to sell, or solicitation of offers to buy the condominium units in state where such offer of solicitation cannot be made.