

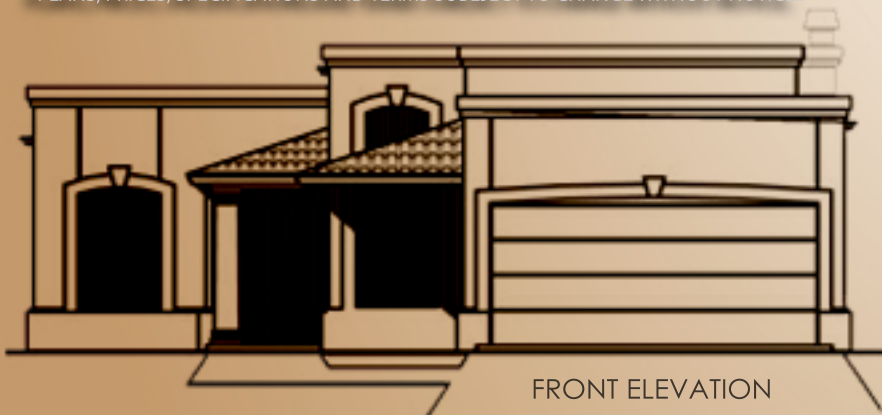


*Saratoga*  
H O M E S

# The Tiber

Plan 441SM- 1510 Sq.Ft. 4 Bed. 2 Bath 2 Car Garage

PLANS, PRICES, SPECIFICATIONS AND TERMS SUBJECT TO CHANGE WITHOUT NOTICE.



This beautiful floor-plan is part of the Tuscany Series by Saratoga Homes. The Tuscany Series homes features standard upgraded amenities including gorgeous granite kitchen counter tops, rustic oil rubbed bronze light fixtures, ceramic tile floors, garden bath tub with ceramic backsplash, listel accent, wrought iron entry door, pendant lighting and recess cans per plan along with many more that make a true Saratoga Home. This beautiful floor plan will comfort your family to the American Dream Home and create memories for a lifetime. From our family to yours, Welcome Home!

915-849-0111 • [mySaratogaHome.com](http://mySaratogaHome.com) • Follow us on:

