



<u>SINGLE FAMILY RESIDENTIAL SALES</u>	DEC. 2012 Units	DEC. 2013 Units	DEC. 2012 Median Price	DEC. 2013 Median Price
Puna	44	50	\$162,500	\$177,000
South Hilo	27	18	\$250,000	\$322,000
North Hilo	0	1	\$0	\$340,000
Hamakua	2	5	\$282,500	\$280,000
North Kohala	4	1	\$787,500	\$535,000
South Kohala	14	15	\$402,500	\$450,000
North Kona	50	35	\$399,500	\$442,000
South Kona	12	4	\$442,500	\$352,500
Ka'u	7	10	\$155,000	\$132,000
SUMMARY	160	139	\$306,650	\$285,000

<u>CONDOMINIUM SALES</u>	DEC. 2012 Units	DEC. 2013 Units	DEC. 2012 Median Price	DEC. 2013 Median Price
Puna	0	0	\$0	\$0
South Hilo	2	4	\$92,500	\$159,100
North Hilo	0	0	\$0	\$0
Hamakua	0	0	\$0	\$0
North Kohala	0	0	\$0	\$0
South Kohala	21	10	\$411,500	\$578,750
North Kona	31	29	\$275,000	\$225,950
South Kona	0	0	\$0	\$0
Ka'u	0	0	\$0	\$0
SUMMARY	54	43	\$326,000	\$230,950

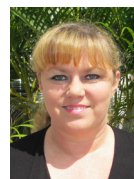
<u>LAND SALES</u>	DEC. 2012 Units	DEC. 2013 Units	DEC. 2012 Median Price	DEC. 2013 Median Price
Puna	50	62	\$17,250	\$20,750
South Hilo	9	16	\$250,000	\$175,000
North Hilo	0	1	\$0	\$265,000
Hamakua	0	1	\$0	\$42,500
North Kohala	1	2	\$250,000	\$278,550
South Kohala	3	11	\$400,000	\$250,000
North Kona	14	11	\$195,950	\$179,500
South Kona	1	7	\$46,500	\$240,000
Ka'u	19	7	\$19,000	\$29,000
SUMMARY	97	118	\$26,000	\$37,950

Big Island Active Listings*			
Month	Residential	Condominium	Vacant Land
Dec-12	44	8	96
Jan-13	77	24	134
Feb-13	69	15	132
Mar-13	62	23	171
Apr-13	96	24	153
May-13	122	31	166
Jun-13	127	33	145
July-13	130	33	150
Aug-13	126	54	159
Sept-13	162	50	120
Oct-13	148	52	155
Nov-13	153	43	161
Dec-13			

KAILUA-KONA OFFICE | 75-5722 KUAKINI HIGHWAY, SUITE #108 | KAILUA-KONA, HI 96740 | 327-3700 | FAX (866) 745-2082 | ORTC.COM



JODIE FELTMANN
VP, Branch Manager,
Escrow Officer
JFeltmann@ortc.com



ANGELA BYERLY
Escrow Officer
AByerly@ortc.com



SEAN KALAKAU
Escrow Officer
SKalakau@ortc.com



DONNA LEE
Escrow Assistant
DLee@ortc.com



SHERRY ORTIZ
Escrow Assistant
SherryO@ortc.com



JENNI LEE
Account Executive
JenniL@ortc.com
(808) 430-3022

Our Promise

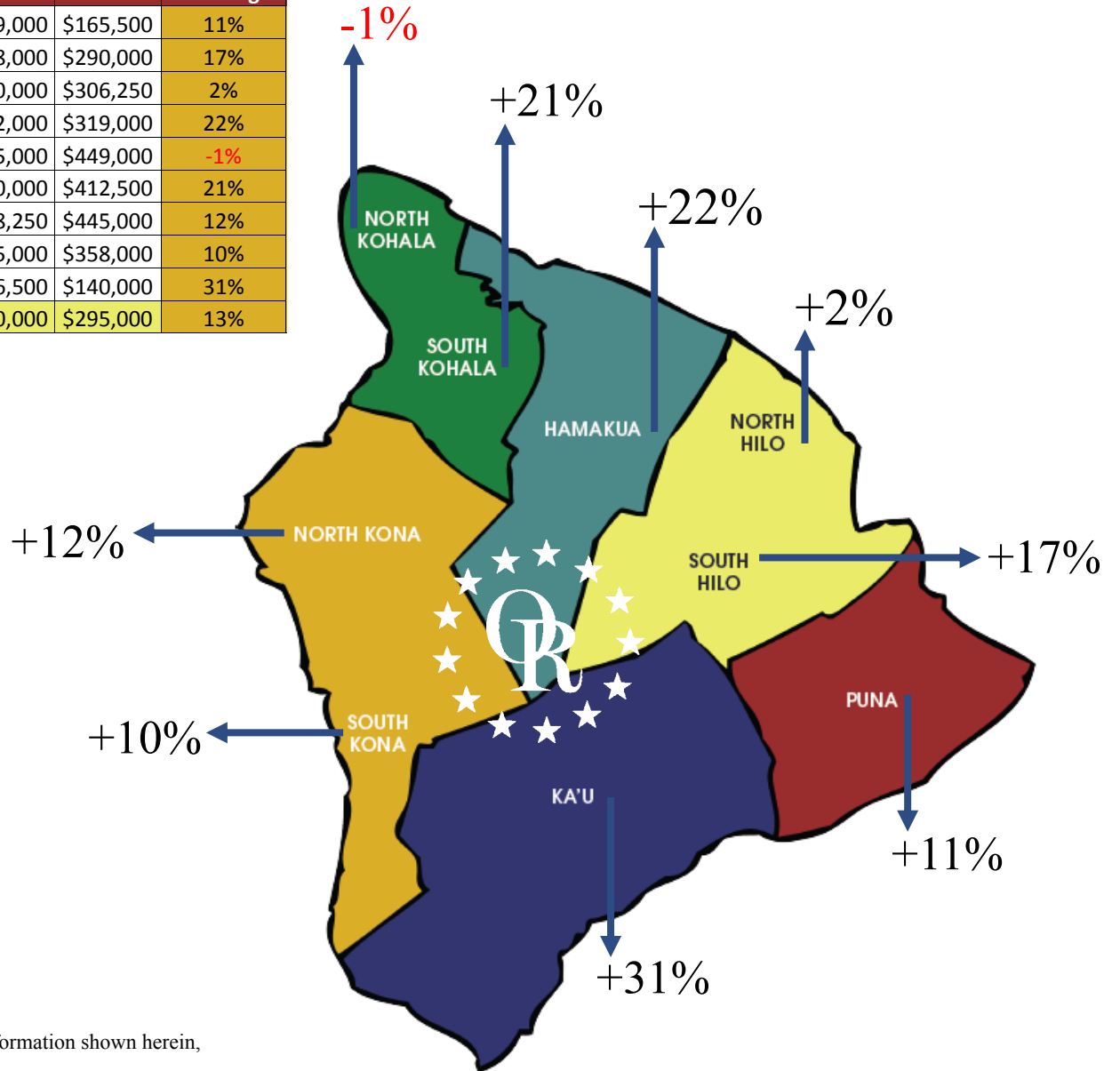
"We increase the value of real estate transactions for all participants by identifying, underwriting and managing each transaction with the highest standards of technical skill, client service and professional integrity"

2013 SINGLE FAMILY Year to Date Median Sales Price

(comparing 01/01/2012 thru 12/31/2012 with 01/01/2013 thru 12/31/2013)

SINGLE FAMILY Year to Date Sales	2012	2013	% Change
Puna	496	588	19%
South Hilo	197	252	28%
North Hilo	20	26	30%
Hamakua	43	50	16%
North Kohala	49	65	33%
South Kohala	203	216	6%
North Kona	430	486	13%
South Kona	65	84	29%
Ka'u	110	109	1%
SUMMARY	1613	1876	16%

2012 Median Sales Price	2013 Median Sales Price	% Change
\$149,000	\$165,500	11%
\$248,000	\$290,000	17%
\$300,000	\$306,250	2%
\$262,000	\$319,000	22%
\$455,000	\$449,000	-1%
\$340,000	\$412,500	21%
\$398,250	\$445,000	12%
\$325,000	\$358,000	10%
\$106,500	\$140,000	31%
\$260,000	\$295,000	13%



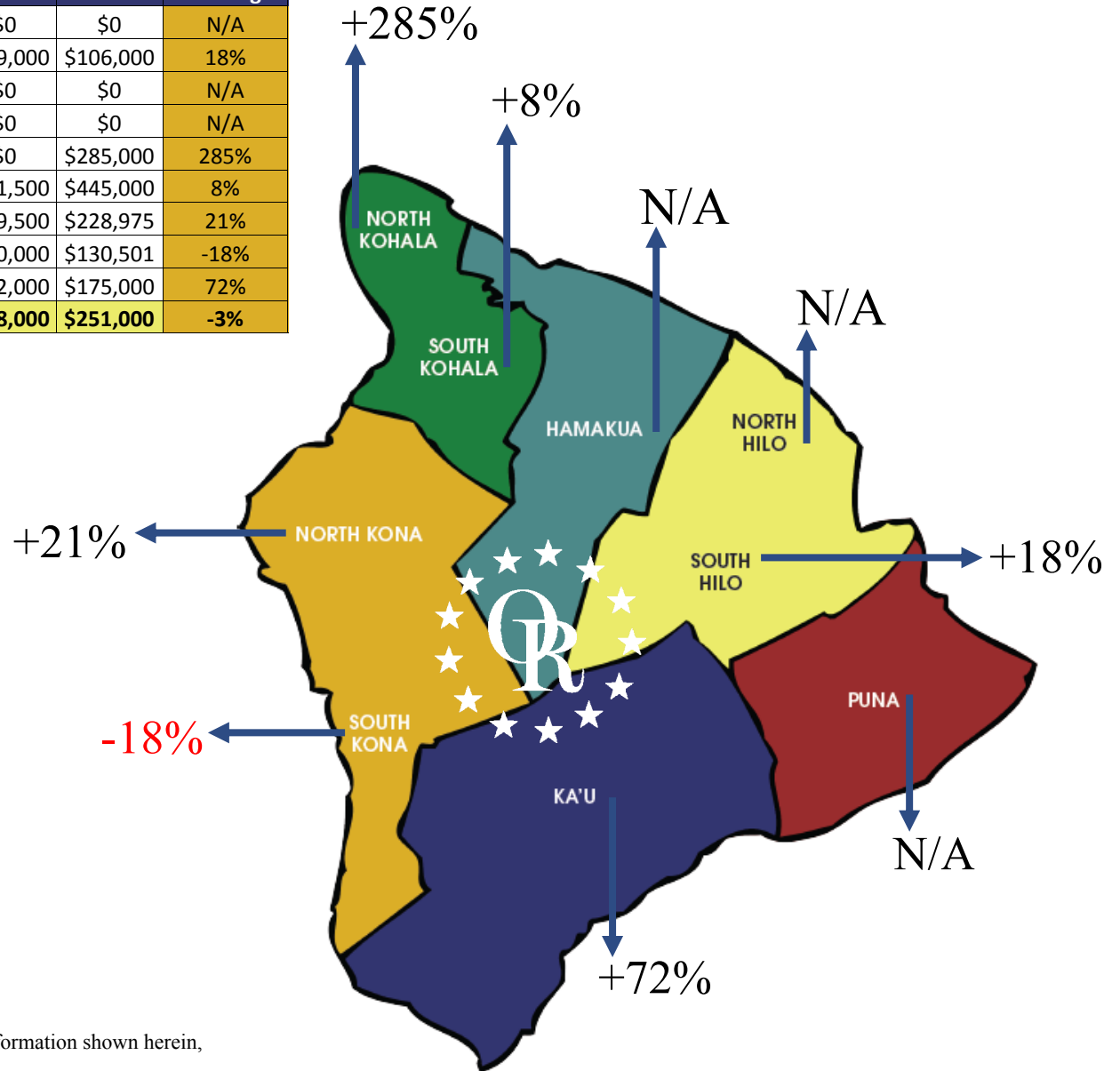
'All information taken from Hawaii Information Services. MLS data information shown herein, while not guaranteed, is derived from sources deemed reliable.'

2013 CONDOMINIUM Year to Date Median Sales Price

(comparing 01/01/2012 thru 12/31/2012 with 01/01/2013 thru 12/31/2013)

CONDOMINIUM Year to Date Sales	2012	2013	% Change
Puna	0	0	N/A
South Hilo	37	57	54%
North Hilo	0	0	N/A
Hamakua	0	0	N/A
North Kohala	0	1	100%
South Kohala	209	206	-1%
North Kona	343	374	9%
South Kona	1	1	0%
Ka'u	1	2	100%
SUMMARY	591	641	8%

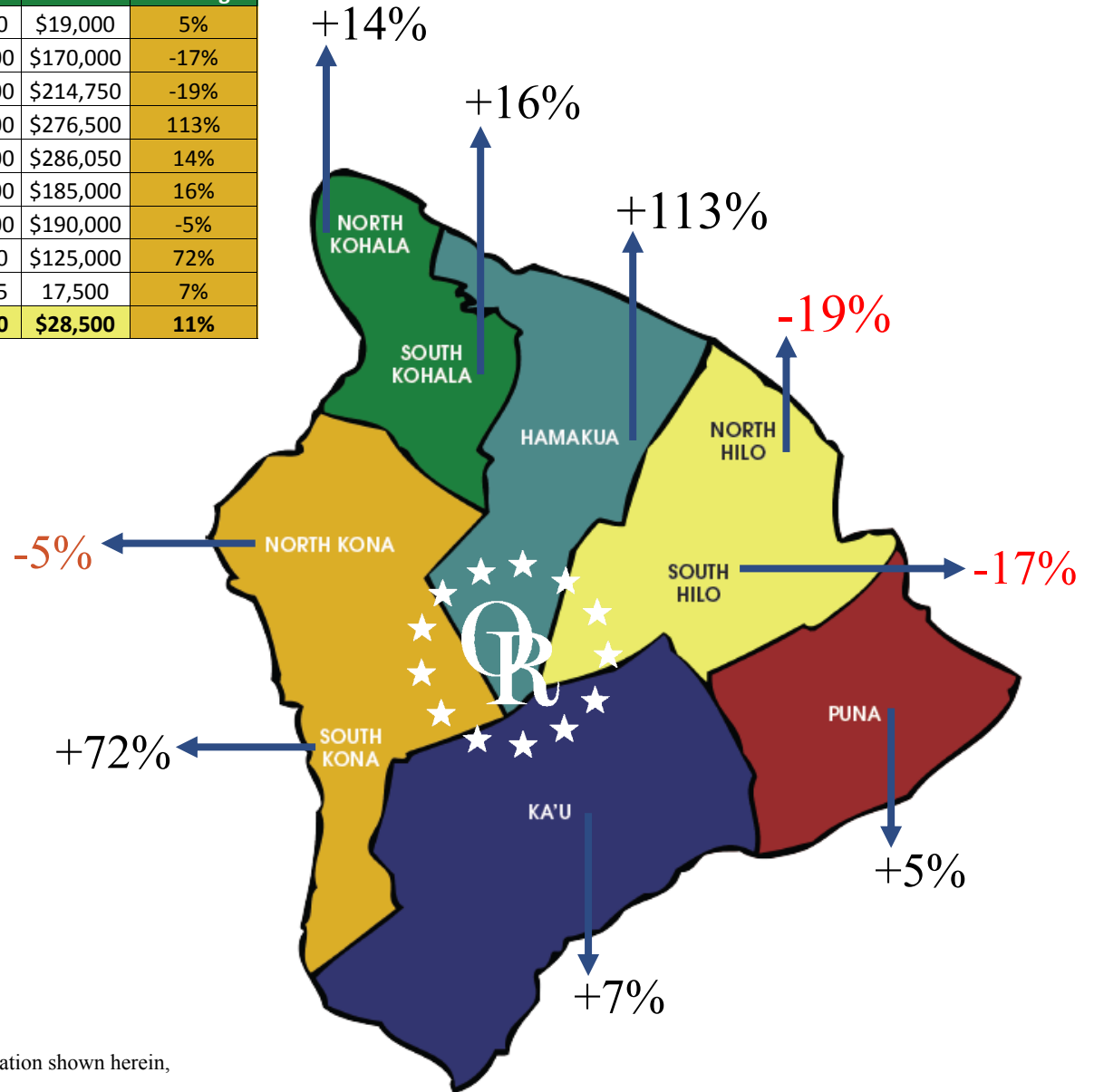
2012 Median Sales Price	2013 Median Sales Price	% Change
\$0	\$0	N/A
\$129,000	\$106,000	18%
\$0	\$0	N/A
\$0	\$0	N/A
\$0	\$285,000	285%
\$411,500	\$445,000	8%
\$189,500	\$228,975	21%
\$160,000	\$130,501	-18%
\$102,000	\$175,000	72%
\$258,000	\$251,000	-3%



'All information taken from Hawaii Information Services. MLS data information shown herein, while not guaranteed, is derived from sources deemed reliable.'

<u>LAND</u> Year to Date Sales	2012	2013	% Change
Puna	592	909	54%
South Hilo	63	108	71%
North Hilo	6	14	133%
Hamakua	19	18	-5%
North Kohala	36	46	28%
South Kohala	45	67	49%
North Kona	111	181	63%
South Kona	34	69	103%
Ka'u	138	160	16%
SUMMARY	1044	1572	51%

2012 Median Sales Price	2013 Median Sales Price	% Change
\$20,000	\$19,000	5%
\$204,500	\$170,000	-17%
\$264,500	\$214,750	-19%
\$130,000	\$276,500	113%
\$250,000	\$286,050	14%
\$160,000	\$185,000	16%
\$199,000	\$190,000	-5%
\$72,750	\$125,000	72%
\$16,375	17,500	7%
\$25,700	\$28,500	11%



'All information taken from Hawaii Information Services. MLS data information shown herein, while not guaranteed, is derived from sources deemed reliable.'